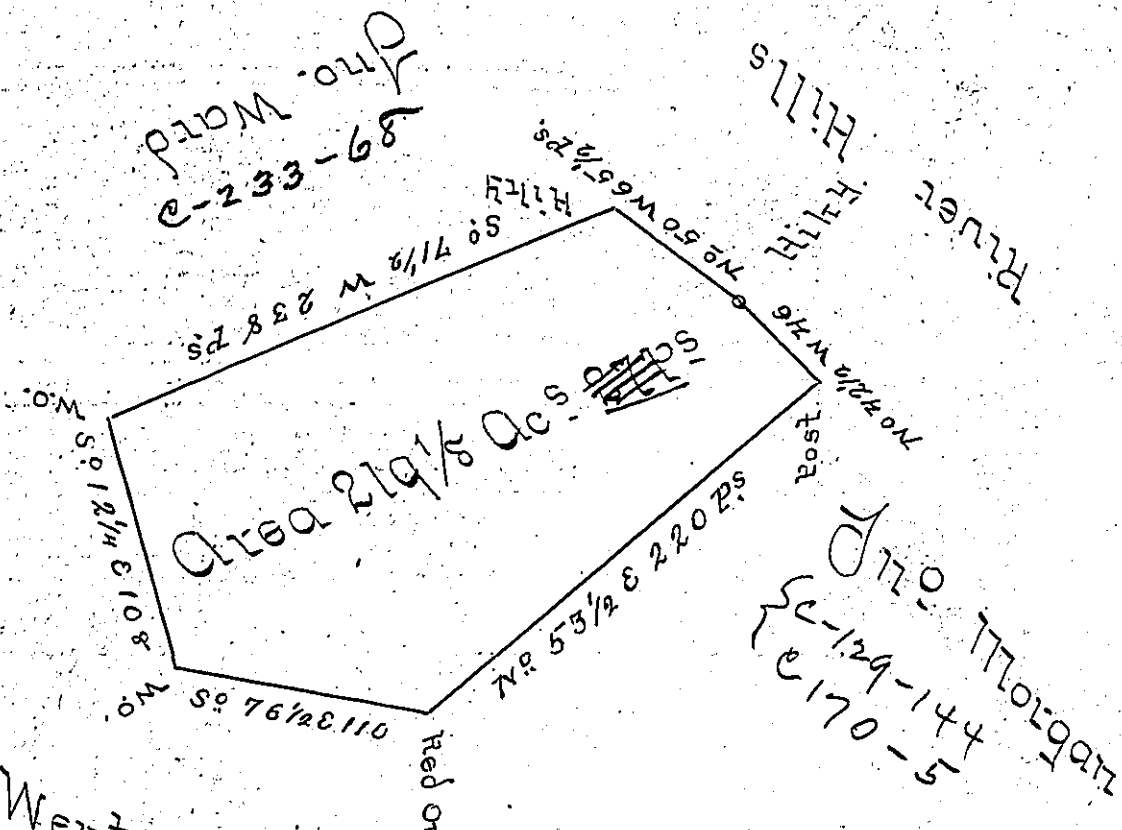


(Moon Twp. Allegheny Co.)

148 (No. Pat)

Geo. Ward  
e-233-68

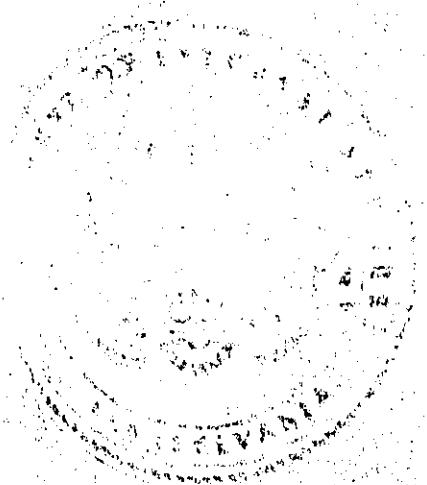


Geo. Wentzell  
A-2-23

A Draught of a Survey call'd Radner lying between the Narrows Run & Thorn's Run in Washington County contg. 219 Ac<sup>s</sup> & 27<sup>ps</sup> with the usual Allow<sup>ce</sup> executed Dec<sup>r</sup> 21<sup>st</sup> 1785. in Pursuance of a Warrant in the Name of Geo. Vaile for 200 Ac<sup>s</sup> dated May 24<sup>th</sup> 1785.

John Lukens Esq<sup>r</sup>  
Survey Gen<sup>l</sup>

Presley Newill } D. Surs  
Matt<sup>w</sup> Ritchie }



IN TESTIMONY that the above is a copy of the original remaining on file in the Department of Internal Affairs of Pennsylvania, made conformably to an Act of Assembly approved the 16th day of February, 1833, I have hereunto set my Hand and caused the Seal of said Department to be affixed at Harrisburg, this first day of January 1901.

James W. Fatta  
Secretary of Internal Affairs.